





WADV820  
○ 480 l m<sup>2</sup>  
matt | **V3**

WARV820  
○ 500 l m<sup>2</sup>  
matt | **V3**



WADV821  
○ 480 l m<sup>2</sup>  
matt | **V3**

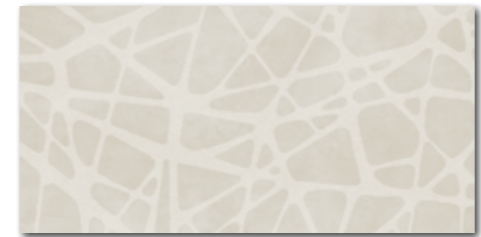
WARV821  
○ 500 l m<sup>2</sup>  
matt | **V3**



30x60



WADV826  
○ 480 l m<sup>2</sup>  
mattglossy | **V4**



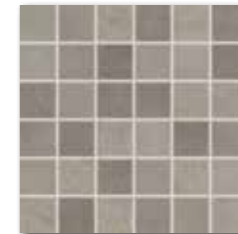
WARV833  
○ 500 l m<sup>2</sup>  
mattglossy | **V4**



WARV831  
○ 500 l m<sup>2</sup>  
mattglossy | **V4**



WDM05820 (SHEET)  
○ 320 l Netz  
matt  
elfenbein | ivory



WDM05821 (SHEET)  
○ 320 l Netz  
matt  
braun-grau | brown-grey

5x5 | 30x30



Produkt | product



EN



St/m<sup>2</sup>



m<sup>2</sup>



m<sup>2</sup>



kg



kg/m<sup>2</sup>



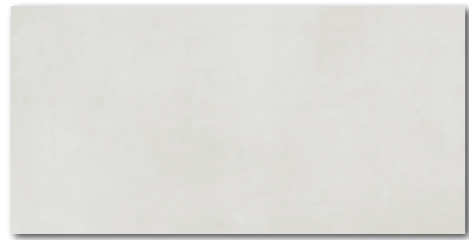
brutto kg

Produkt   product	30x60	298x598x8	EN	8	5,56	1,44	40	57,60	21,3	14,8	876
Wandfliese   wall tile	30x60	298x598x8	EN 14411 - L BIII	8	5,56	1,44	40	57,60	21,3	14,8	876
Mosaik sheet 30x30 cm   mosaic sheet 30x30 cm	5x5	48x48x8	STO No. 030 - 059826	4	11	0,36	-	-	5,2	14,8	-

Das Produkt zeigt die individuellen Designmöglichkeiten auf in jeder Verpackung. | This product is deliberately mixed in packing to include a random selection of designs.

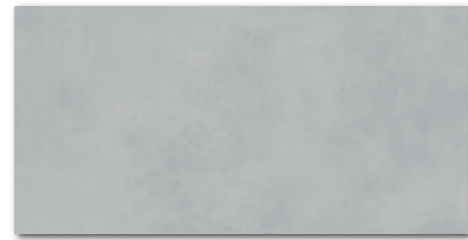


30x60



WADVK822  
○ 480 l m<sup>2</sup>  
matt | **V3**

WARVK822  
○ 500 l m<sup>2</sup>  
matt | **V3**



WADVK823  
○ 480 l m<sup>2</sup>  
matt | **V3**

WARVK823  
○ 500 l m<sup>2</sup>  
matt | **V3**



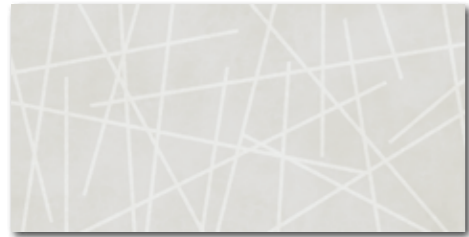
WADVK824  
○ 480 l m<sup>2</sup>  
matt | **V3**

WARVK824  
○ 500 l m<sup>2</sup>  
matt | **V3**



WADVK825  
○ 480 l m<sup>2</sup>  
matt | **V3**

WARVK825  
○ 500 l m<sup>2</sup>  
matt | **V3**



WADVK827  
○ 480 l m<sup>2</sup>  
mattlglossy | **V4**



WADVK828  
○ 480 l m<sup>2</sup>  
mattlglossy | **V4**



WARVK834  
○ 500 l m<sup>2</sup>  
mattlglossy | **V4**



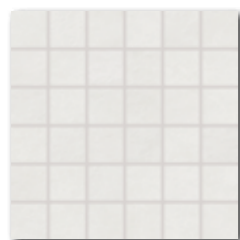
WARVK835  
○ 500 l m<sup>2</sup>  
mattlglossy | **V4**



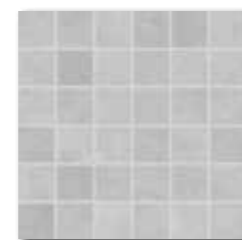
WARVK832  
○ 500 l m<sup>2</sup>  
mattlglossy | **V4**



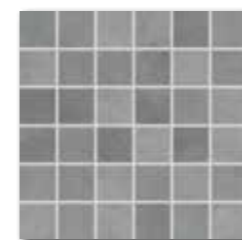
5x5 | 30x30



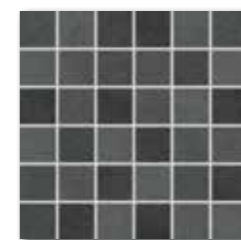
WDM05822 (SHEET)  
○ 320 l Netz  
matt  
weiß | white



WDM05823 (SHEET)  
○ 320 l Netz  
matt  
hellgrau | light grey



WDM05824 (SHEET)  
○ 320 l Netz  
matt  
dunkelgrau | dark grey



WDM05825 (SHEET)  
○ 320 l Netz  
matt  
schwarz | black



30x60

Produkt | product



Produkt   product	H	W	EN	Box	St/m <sup>2</sup>	m <sup>2</sup>	Box	m <sup>2</sup>	kg	kg/m <sup>2</sup>	brutto kg
Wandfliese   wall tile	30x60	298x598x8	EN 14411 - L BIII	8	5,56	1,44	40	57,60	21,3	14,8	87,6
Mosaik sheet 30x30 cm   mosaic sheet 30x30 cm	5x5	48x48x8	STO No. 030 - 059826	4	11	0,36	-	-	5,2	14,8	-

*i* Das Produkt zeigt die individuellen Designmöglichkeiten auf in jeder Verpackung. | This product is deliberately mixed in packing to include a random selection of designs.

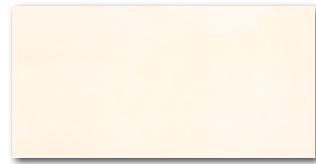
5x5 | 30x30



20x40



WADMB719  
○ 440 | m<sup>2</sup>  
matt | V2



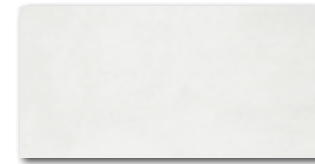
WADMB720  
○ 440 | m<sup>2</sup>  
matt | V2



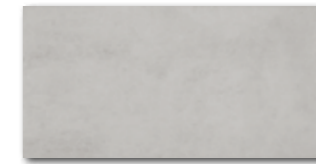
WADMB721  
○ 440 | m<sup>2</sup>  
matt | V2



WADMB722  
○ 440 | m<sup>2</sup>  
matt | V2



WADMB723  
○ 440 | m<sup>2</sup>  
matt | V2



WADMB724  
○ 440 | m<sup>2</sup>  
matt | V2

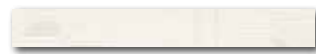


WADMB220  
○ 440 | m<sup>2</sup>  
matt | V4  
elfenbein | ivory



WADMB223  
○ 440 | m<sup>2</sup>  
matt | V4  
hellgrau | light grey

40x4,8

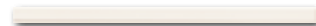


WLAMH719  
○ 260 | St  
matt | glossy



WLAMH722  
○ 260 | St  
matt | glossy

40x2



WLRMG719  
○ 240 | St  
matt



WLRMG720  
○ 240 | St  
matt



WLRMG721  
○ 240 | St  
matt



WLRMG722  
○ 240 | St  
matt



WLRMG723  
○ 240 | St  
matt



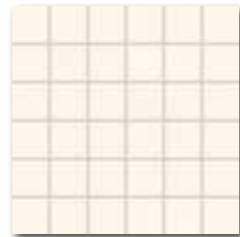
WLRMG724  
○ 240 | St  
matt

5x5 | 30x30

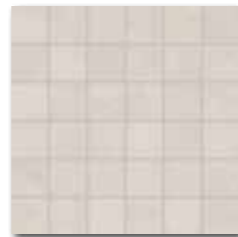
V2  
R



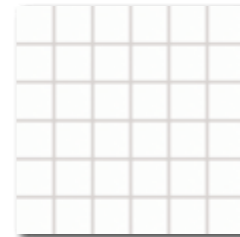
WDM05719 (SHEET)  
○ 320 | Netz  
matt  
weiß-beige | white-beige



WDM05720 (SHEET)  
○ 320 | Netz  
matt  
elfenbein | ivory



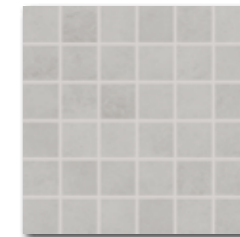
WDM05721 (SHEET)  
○ 320 | Netz  
matt  
braun-grau | brown-grey



WDM05722 (SHEET)  
○ 320 | Netz  
matt  
weiß-grau | white-grey



WDM05723 (SHEET)  
○ 320 | Netz  
matt  
hellgrau | light grey



WDM05724 (SHEET)  
○ 320 | Netz  
matt  
dunkelgrau | dark grey

Produkt   product	cm	mm	EN	St/m <sup>2</sup>	m <sup>2</sup>	kg	kg/m <sup>2</sup>	brutto kg
Wandfliese   wall tile	20x40	198x398x7	EN 14411 - L BIII	20	12,5	1,60	48	76,00
Bordüre   listel	40x4,8	398x48x7	EN 14411 - L BIII	7	52,1	0,13	-	1,8
Bordüre   relief listel	40x2	398x20	STO No. 030 - 060753	12	125	0,09	-	1,7
Mosaik sheet 30x30 cm   mosaic sheet 30x30 cm	5x5	48x48x7	STO No. 030 - 059826	3/4	11	0,27/0,36	-	3,5/4,8

Das Produkt zeigt die individuellen Designmöglichkeiten auf in jeder Verpackung. | This product is deliberately mixed in packing to include a random selection of designs.

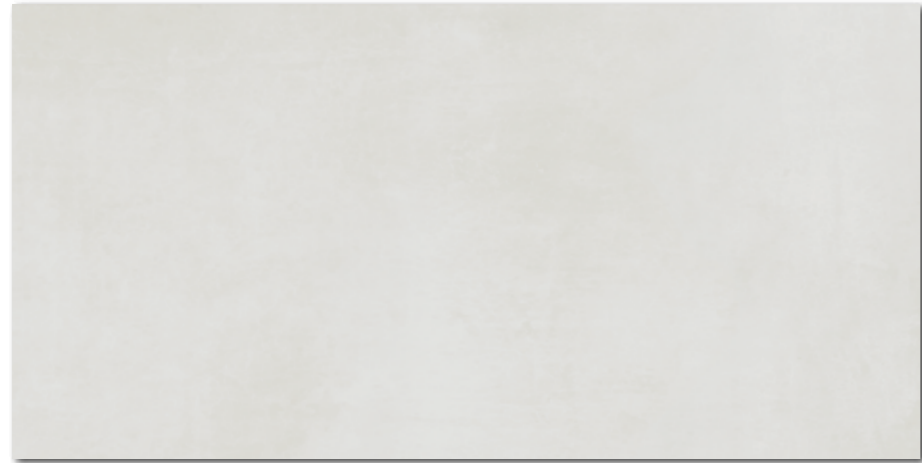
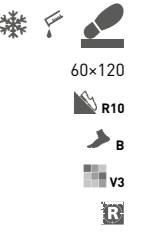
20x40

40x4,8

40x2

5x5 | 30x30

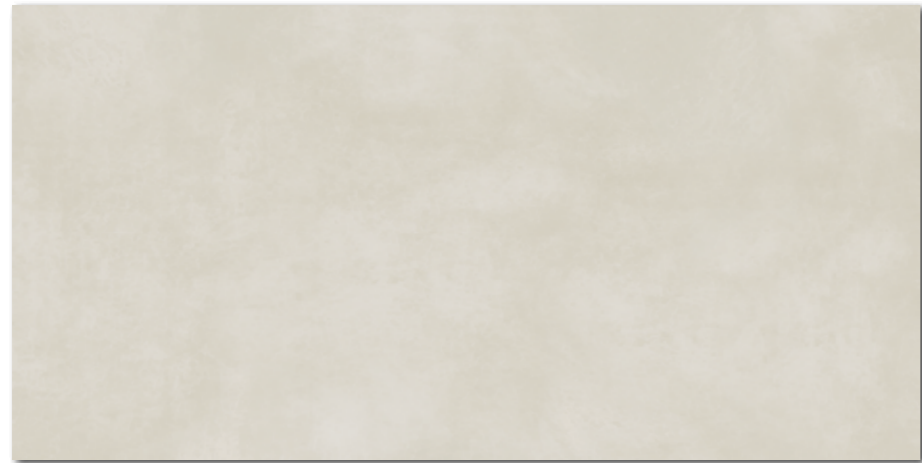
V2  
R



DARV1722  
PEI 5  $\odot$  700 l m<sup>2</sup>  
matt  
weiß | white



DARV1723  
PEI 4  $\odot$  700 l m<sup>2</sup>  
matt  
hellgrau | light grey



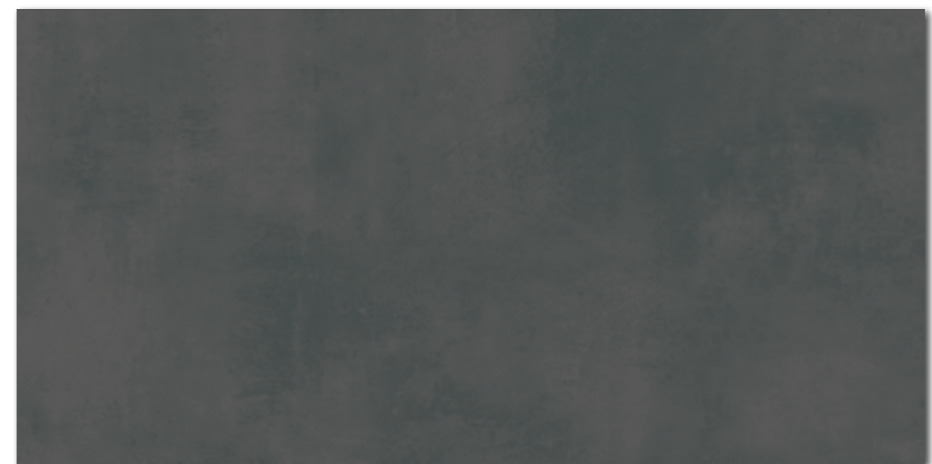
DARV1720  
PEI 5  $\odot$  700 l m<sup>2</sup>  
matt  
elfenbein | ivory



DARV1724  
PEI 4  $\odot$  700 l m<sup>2</sup>  
matt  
dunkelgrau | dark grey



DARV1721  
PEI 4  $\odot$  700 l m<sup>2</sup>  
matt  
braun-grau | brown-grey



DARV1725  
PEI 4  $\odot$  700 l m<sup>2</sup>  
matt  
schwarz | black

Produkt   product	cm	mm	EN		St/m <sup>2</sup>	m <sup>2</sup>		kg	kg/m <sup>2</sup>	brutto kg	
Bodenfliese   floor tile	60x120	598x1198x10	EN 14411 - G Bla	2	1,4	1,44	27	38,88	32,7	22,7	908



DAR81722  
PEI 5 ○ 700 | m<sup>2</sup>  
matt



DAR81720  
PEI 5 ○ 700 | m<sup>2</sup>  
matt



DAR81721  
PEI 4 ○ 700 | m<sup>2</sup>  
matt



DAR84722  
PEI 5 ○ 720 | m<sup>2</sup>  
matt  
weiß | white



DAR84720  
PEI 5 ○ 720 | m<sup>2</sup>  
matt  
elfenbein | ivory

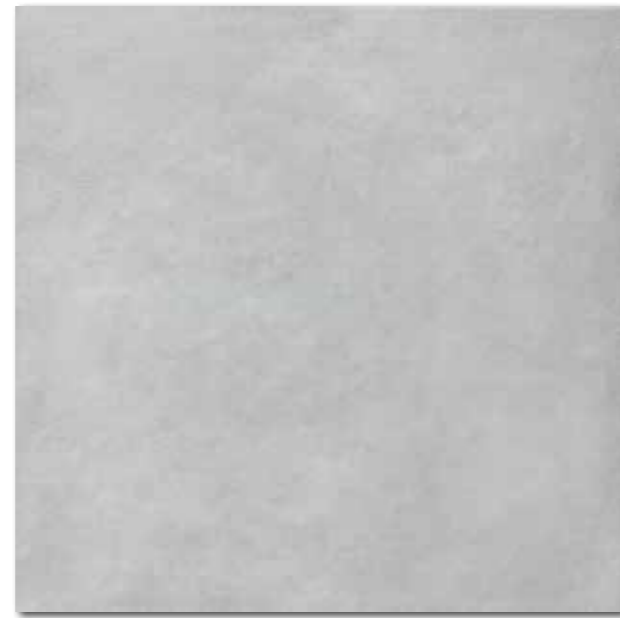


DAR84721  
PEI 4 ○ 720 | m<sup>2</sup>  
matt  
braun-grau | brown-grey



Produkt   product	cm	mm	EN	Stk/m <sup>2</sup>	m <sup>2</sup>	m <sup>3</sup>	kg	kg/m <sup>2</sup>	brutto kg		
Bodenfliese   floor tile	80-80	798-798-10	EN 14411 - G Bla	2	1,6	1,28	42	53,76	28,0	21,9	1 202
Bodenfliese   floor tile	40-80	398-798-10	EN 14411 - G Bla	4	3,1	1,28	42	53,76	28,0	21,9	1 202

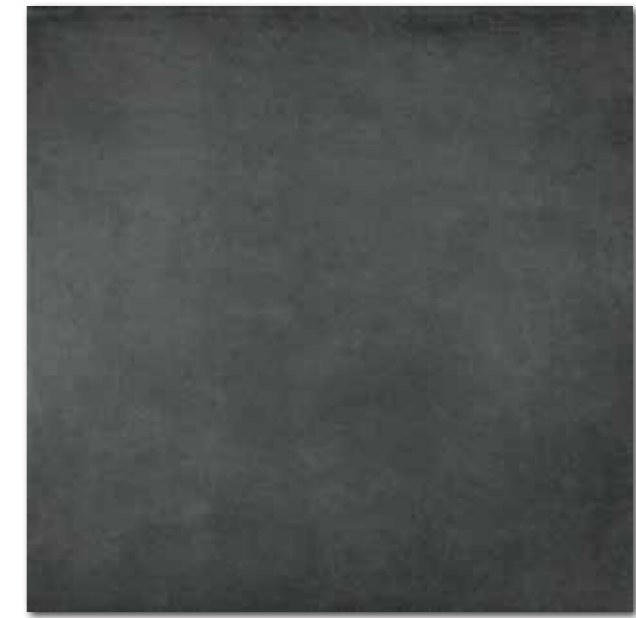
Empfohlene Formatkombinationen siehe Seite 428. | Recommended combinations of modular sizes see page 428.



DAR81723  
PEI 4 ○ 700 | m<sup>2</sup>  
matt



DAR81724  
PEI 4 ○ 700 | m<sup>2</sup>  
matt



DAR81725  
PEI 4 ○ 700 | m<sup>2</sup>  
matt



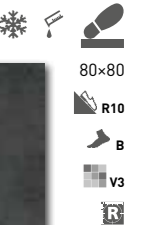
DAR84723  
PEI 4 ○ 720 | m<sup>2</sup>  
matt  
hellgrau | light grey



DAR84724  
PEI 4 ○ 720 | m<sup>2</sup>  
matt  
dunkelgrau | dark grey



DAR84725  
PEI 4 ○ 720 | m<sup>2</sup>  
matt  
schwarz | black



80x80  
R10  
B  
V3  
R



40x80  
R10  
B  
V3  
R

RAKO Home

Produkt   product	cm	mm	EN	Stk/m <sup>2</sup>	m <sup>2</sup>	m <sup>2</sup>	kg	kg/m <sup>2</sup>	brutto kg		
Bodenfliese   floor tile	80-80	798-798-10	EN 14411 - G Bla	2	1,6	1,28	42	53,76	28,0	21,9	1 202
Bodenfliese   floor tile	40-80	398-798-10	EN 14411 - G Bla	4	3,1	1,28	42	53,76	28,0	21,9	1 202

Empfohlene Formatkombinationen siehe Seite 428. | Recommended combinations of modular sizes see page 428.



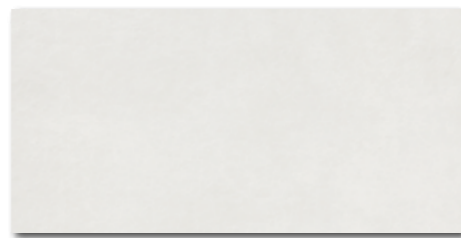
DAR63722  
PEI 5 ○ 560 l m<sup>2</sup>  
matt



DAR63720  
PEI 5 ○ 560 l m<sup>2</sup>  
matt



DAR63721  
PEI 4 ○ 560 l m<sup>2</sup>  
matt



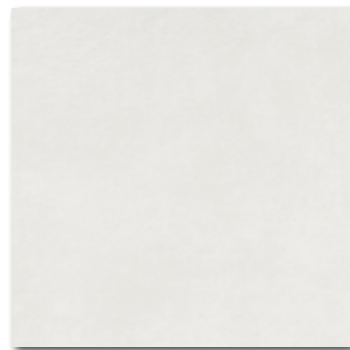
DARSE722  
PEI 5 ○ 540 l m<sup>2</sup>  
matt



DARSE720  
PEI 5 ○ 540 l m<sup>2</sup>  
matt



DARSE721  
PEI 4 ○ 540 l m<sup>2</sup>  
matt



DAR4H722  
PEI 5 ○ 520 l m<sup>2</sup>  
matt



DAR4H720  
PEI 5 ○ 520 l m<sup>2</sup>  
matt



DAR4H721  
PEI 4 ○ 520 l m<sup>2</sup>  
matt



DDVP4722 (SHEET)  
PEI 5 ○ 610 l Netz  
matt

weiß | white



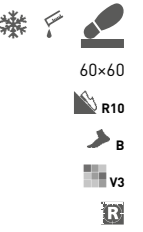
DDVP4720 (SHEET)  
PEI 5 ○ 610 l Netz  
matt

elfenbein | ivory



DDVP4721 (SHEET)  
PEI 4 ○ 610 l Netz  
matt

braun-grau | brown-grey



60x60

R10

B

V3

R

30x60

R10

B

V3

R

45x45

R10

B

V3

R

30x45

R10

B

V3

R

Produkt | product



EN



St/m<sup>2</sup>



m<sup>2</sup>



kg/m<sup>2</sup>



brutto kg

Produkt   product	cm	mm	EN	mm	St/m <sup>2</sup>	m <sup>2</sup>	kg	kg/m <sup>2</sup>	brutto kg	
Bodenfliese   floor tile	60x60	598x598x10	EN 14411 - G Bla	3	2,8	1,08	32	34,56	23,7	782
Bodenfliese   floor tile	30x60	298x598x10	EN 14411 - G Bla	6	5,6	1,08	40	43,20	23,7	971
Bodenfliese   floor tile	45x45	445x445x8	EN 14411 - G Bla	6	5	1,21	34	41,14	21,1	741
Bodenfliese   floor tile	30x45	298x445x8	EN 14411 - G Bla	5	7,4	0,68	36	-	10,5	17,4

Empfohlene Formatkombinationen siehe Seite 428. | Recommended combinations of modular sizes see page 428.





DAR63723  
PEI 4 ○ 560 l m<sup>2</sup>  
matt



DAR63724  
PEI 4 ○ 560 l m<sup>2</sup>  
matt



DAR63725  
PEI 4 ○ 560 l m<sup>2</sup>  
matt



DARSE723  
PEI 4 ○ 540 l m<sup>2</sup>  
matt



DARSE724  
PEI 4 ○ 540 l m<sup>2</sup>  
matt



DARSE725  
PEI 4 ○ 540 l m<sup>2</sup>  
matt



DAR4H723  
PEI 4 ○ 520 l m<sup>2</sup>  
matt



DAR4H724  
PEI 4 ○ 520 l m<sup>2</sup>  
matt



DAR4H725  
PEI 4 ○ 520 l m<sup>2</sup>  
matt



DDVP4723 (SHEET)  
PEI 4 ○ 610 l Netz  
matt



DDVP4724 (SHEET)  
PEI 4 ○ 610 l Netz  
matt

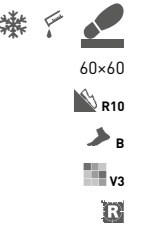


DDVP4725 (SHEET)  
PEI 4 ○ 610 l Netz  
matt

hellgrau | light grey

dunkelgrau | dark grey

schwarz | black



60x60

R10

B

V3

R

30x60

R10

B

V3

R

45x45

R10

B

V3

R

30x45

R10

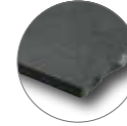
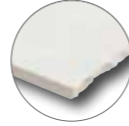
B

V3

R

Produkt   product	cm	mm	EN	St/m <sup>2</sup>	m <sup>2</sup>	kg	brutto kg
Bodenfliese   floor tile	60x60	598x598x10	EN 14411 - G Bla	3	2,8	1,08	32
Bodenfliese   floor tile	30x60	298x598x10	EN 14411 - G Bla	6	5,6	1,08	40
Bodenfliese   floor tile	45x45	445x445x8	EN 14411 - G Bla	6	5	1,21	34
Bodenfliese   floor tile	30x45	298x445x8	EN 14411 - G Bla	5	7,4	0,68	36

Empfohlene Formatkombinationen siehe Seite 428. | Recommended combinations of modular sizes see page 428.



DAR34722  
PEI 5 ○ 390 | m<sup>2</sup>  
matt  
weiß | white



DAR26722  
PEI 5 ○ 780 | m<sup>2</sup>  
matt | matt



DAR12722 [SHEET]  
PEI 5 ○ 970 | m<sup>2</sup>  
matt | matt



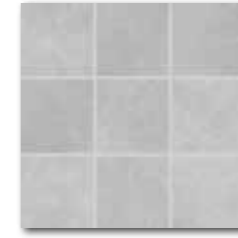
DDM06722 [SHEET]  
PEI 5 ○ 440 | Netz  
matt | matt



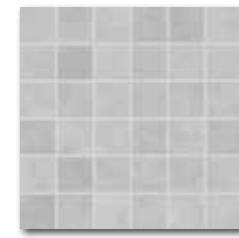
DAR34723  
PEI 4 ○ 390 | m<sup>2</sup>  
matt  
hellgrau | light grey



DAR26723  
PEI 4 ○ 780 | m<sup>2</sup>  
matt | matt



DAR12723 [SHEET]  
PEI 4 ○ 970 | m<sup>2</sup>  
matt | matt



DDM06723 [SHEET]  
PEI 4 ○ 440 | Netz  
matt | matt



DAR34720  
PEI 5 ○ 390 | m<sup>2</sup>  
matt  
elfenbein | ivory



DAR26720  
PEI 5 ○ 780 | m<sup>2</sup>  
matt | matt



DAR12720 [SHEET]  
PEI 5 ○ 970 | m<sup>2</sup>  
matt | matt



DDM06720 [SHEET]  
PEI 5 ○ 440 | Netz  
matt | matt



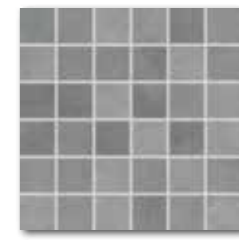
DAR34724  
PEI 4 ○ 390 | m<sup>2</sup>  
matt  
dunkelgrau | dark grey



DAR26724  
PEI 4 ○ 780 | m<sup>2</sup>  
matt | matt



DAR12724 [SHEET]  
PEI 4 ○ 970 | m<sup>2</sup>  
matt | matt



DDM06724 [SHEET]  
PEI 4 ○ 440 | Netz  
matt | matt



DAR34721  
PEI 4 ○ 390 | m<sup>2</sup>  
matt  
braun-grau | brown-grey



DAR26721  
PEI 4 ○ 780 | m<sup>2</sup>  
matt | matt



DAR12721 [SHEET]  
PEI 4 ○ 970 | m<sup>2</sup>  
matt | matt



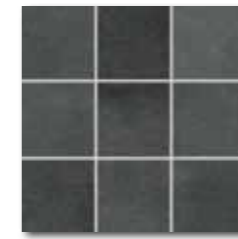
DDM06721 [SHEET]  
PEI 4 ○ 440 | Netz  
matt | matt



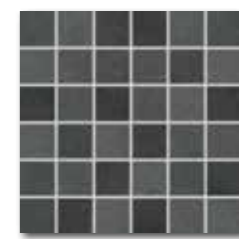
DAR34725  
PEI 4 ○ 390 | m<sup>2</sup>  
matt  
schwarz | black



DAR26725  
PEI 4 ○ 780 | m<sup>2</sup>  
matt | matt

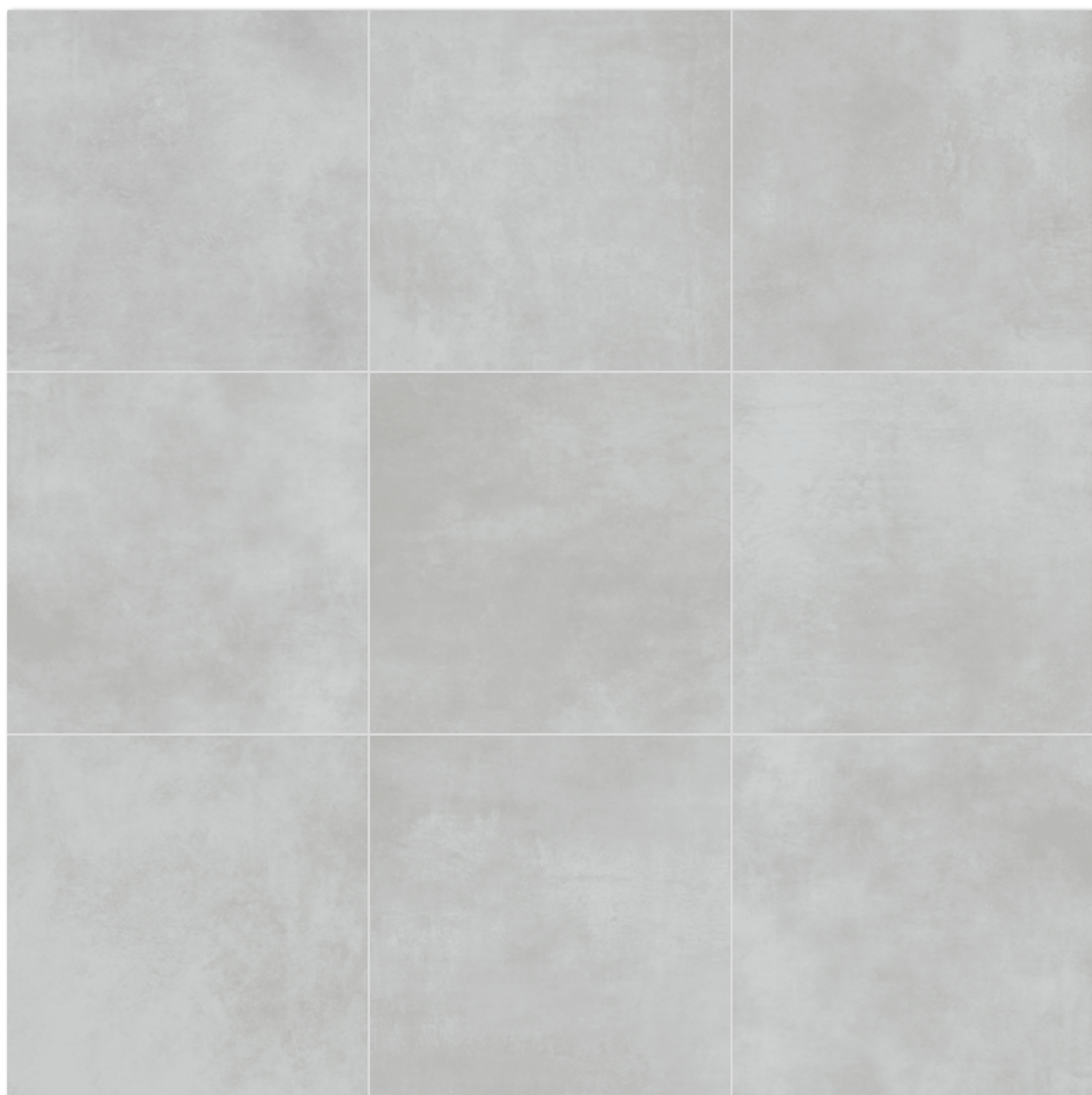


DAR12725 [SHEET]  
PEI 4 ○ 970 | m<sup>2</sup>  
matt | matt



DDM06725 [SHEET]  
PEI 4 ○ 440 | Netz  
matt | matt

Produkt   product	cm	mm	EN	St/m <sup>2</sup>	m <sup>2</sup>	kg	brutto kg
Bodenfliese   floor tile	30x30	298x298x8	EN 14411 - G Bla	13	11	1,18	48
Bodenfliese   floor tile	20x20	198x198x10	EN 14411 - G Bla	23	25	0,92	57
Bodenfliese   floor tile	10x10	98x98x10	EN 14411 - G Bla	10	11	0,91	56
Mosaik sheet 30x30 cm   mosaic sheet 30x30 cm	5x5	48x48x10	EN 14411 - G Bla	3	11	0,27	-

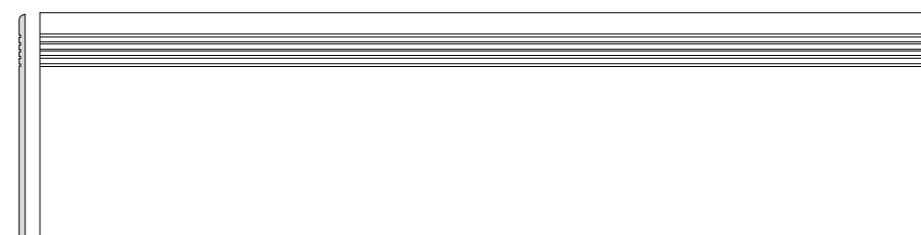


Die Fliesen der Serie zeichnen sich durch ein breites Farbspiel V3 aus. | All products of the entire batch show big deviations in shade difference V3.

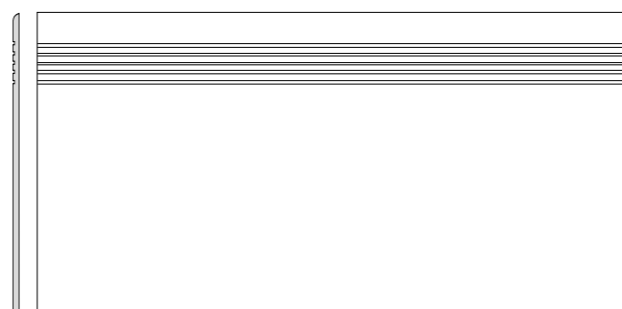
Wir empfehlen, einzelne Fliesen aus mehreren Paketen herauszunehmen und den gesamten Bodenbelag nach der Inspirationsfotodokumentation in den Katalogen RAKO, eventuell den Webseiten [www.rako.eu](http://www.rako.eu), zu komponieren. Wünschenswert ist die Kombination aller Fliesendesigns einschließlich ihrer Drehung um 90° oder 180°, sodass ausgewogene Optik der verlegten Fläche erzielt wird.

Before laying the tiles, we suggest you select from several cartons and arrange them as illustrated in the inspiration photo documentation in RAKO catalogues or website [www.rako.eu](http://www.rako.eu), and mix the tiles to achieve the required result including turning them by 90° or 180°.

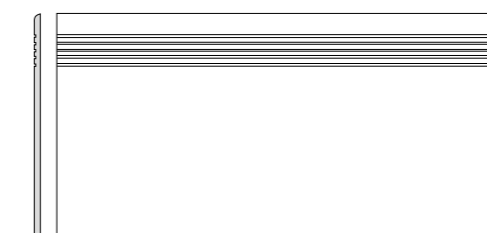
Produkt   product	cm	mm	EN	St/m²	m²	kg	kg/m²	brutto kg
Stufe   step tile	30x120	298x1198x10	STO No. 030 - 059824	5	2,8	1,80	-	40,9
Stufe   step tile	40x80	398x798x10	STO No. 030 - 059824	2	3,1	0,64	-	14,1
Stufe   step tile	30x60	298x598x10	STO No. 030 - 059824	6	5,6	1,08	40	23,7
Sockel   skirting plinth	80x9,5	798x95x10	STO No. 030 - 059824	10	13,2	0,76	-	16,7
Sockel   skirting plinth	60x9,5	598x95x10	STO No. 030 - 059824	13	17,5	0,74	-	16,2
Sockel   skirting plinth	45x8,5	445x85x8	STO No. 030 - 059824	25	26,1	0,96	-	16,7
Stufenformteil   special step tile	40x80	398x798x10	STO No. 030 - 059824	2	-	-	-	-



DCPVF720 elfenbein | ivory  
 DCPVF721 braun-grau | brown-grey  
 DCPVF722 weiß | white  
 DCPVF723 hellgrau | light grey  
 DCPVF724 dunkelgrau | dark grey  
 DCPVF725 schwarz | black  
 PEI 4-5 ○ 840 | St  
 matt



DCP84720 elfenbein | ivory  
 DCP84721 braun-grau | brown-grey  
 DCP84722 weiß | white  
 DCP84723 hellgrau | light grey  
 DCP84724 dunkelgrau | dark grey  
 DCP84725 schwarz | black  
 PEI 4-5 ○ 490 | St  
 matt



DCPSE720 elfenbein | ivory  
 DCPSE721 braun-grau | brown-grey  
 DCPSE722 weiß | white  
 DCPSE723 hellgrau | light grey  
 DCPSE724 dunkelgrau | dark grey  
 DCPSE725 schwarz | black  
 PEI 4-5 ○ 370 | St  
 matt



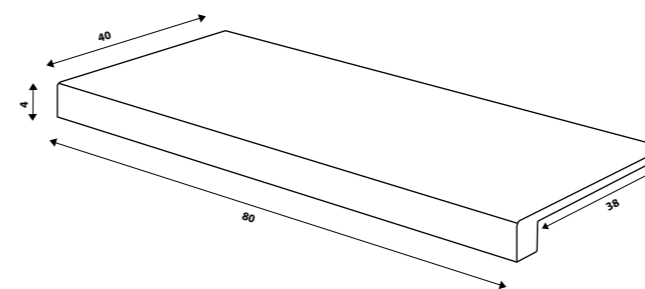
DSA89720 elfenbein | ivory  
 DSA89721 braun-grau | brown-grey  
 DSA89722 weiß | white  
 DSA89723 hellgrau | light grey  
 DSA89724 dunkelgrau | dark grey  
 DSA89725 schwarz | black  
 ○ 290 | St  
 matt



DSAS4720 elfenbein | ivory  
 DSAS4721 braun-grau | brown-grey  
 DSAS4722 weiß | white  
 DSAS4723 hellgrau | light grey  
 DSAS4724 dunkelgrau | dark grey  
 DSAS4725 schwarz | black  
 ○ 220 | St  
 matt



DSAPS720 elfenbein | ivory  
 DSAPS721 braun-grau | brown-grey  
 DSAPS722 weiß | white  
 DSAPS723 hellgrau | light grey  
 DSAPS724 dunkelgrau | dark grey  
 DSAPS725 schwarz | black  
 ○ 200 | St  
 matt



DCF84720 elfenbein | ivory  
 DCF84721 braun-grau | brown-grey  
 DCF84722 weiß | white  
 DCF84723 hellgrau | light grey  
 DCF84724 dunkelgrau | dark grey  
 DCF84725 schwarz | black  
 PEI 4-5 ○ 1250 | St  
 matt



30x120  
 R10  
 B  
 V3



40x80  
 R10  
 B  
 V3



80x9,5  
 60x9,5  
 R10  
 V3



45x8,5  
 R10  
 V3



40x80  
 R10  
 B  
 V3