



æ

e-ssential

THE ELEMENTARY COLLECTION



α
e-ssential

THE ELEMENTARY COLLECTION

The one place that we find everything essential to our existence, is **nature**.

An oasis of inspiration and comfort, *e-ssential* introduces **five carpet styles** made with **100% PA solution-dyed fibre**. Providing **excellent lightfastness**, *e-ssential* is a durable and **environmentally-friendly choice**, especially in areas exposed to strong sunlight.

What's more; *e-blend*, *e-blitz*, *e-check*, *e-firm*, *e-force*, *e-major*, *e-weave* feature impressive stain-resistance and are easy to maintain. **Easy to clean, strong and comfortable**, this carpet collection is an **elementary choice** for commercial spaces.



AN OASIS OF INSPIRATION

Index

1/ <i>e-blend</i>	6
2/ <i>e-blitz</i>	12
3/ <i>e-check</i>	18
4/ <i>e-firm</i>	24
5/ <i>e-force</i>	30
6/ <i>e-major</i>	36
7/ <i>e-weave</i>	42

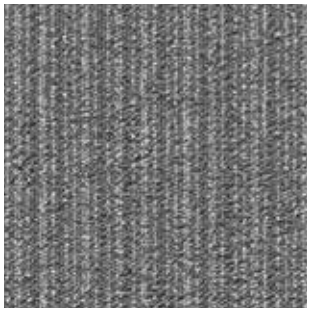
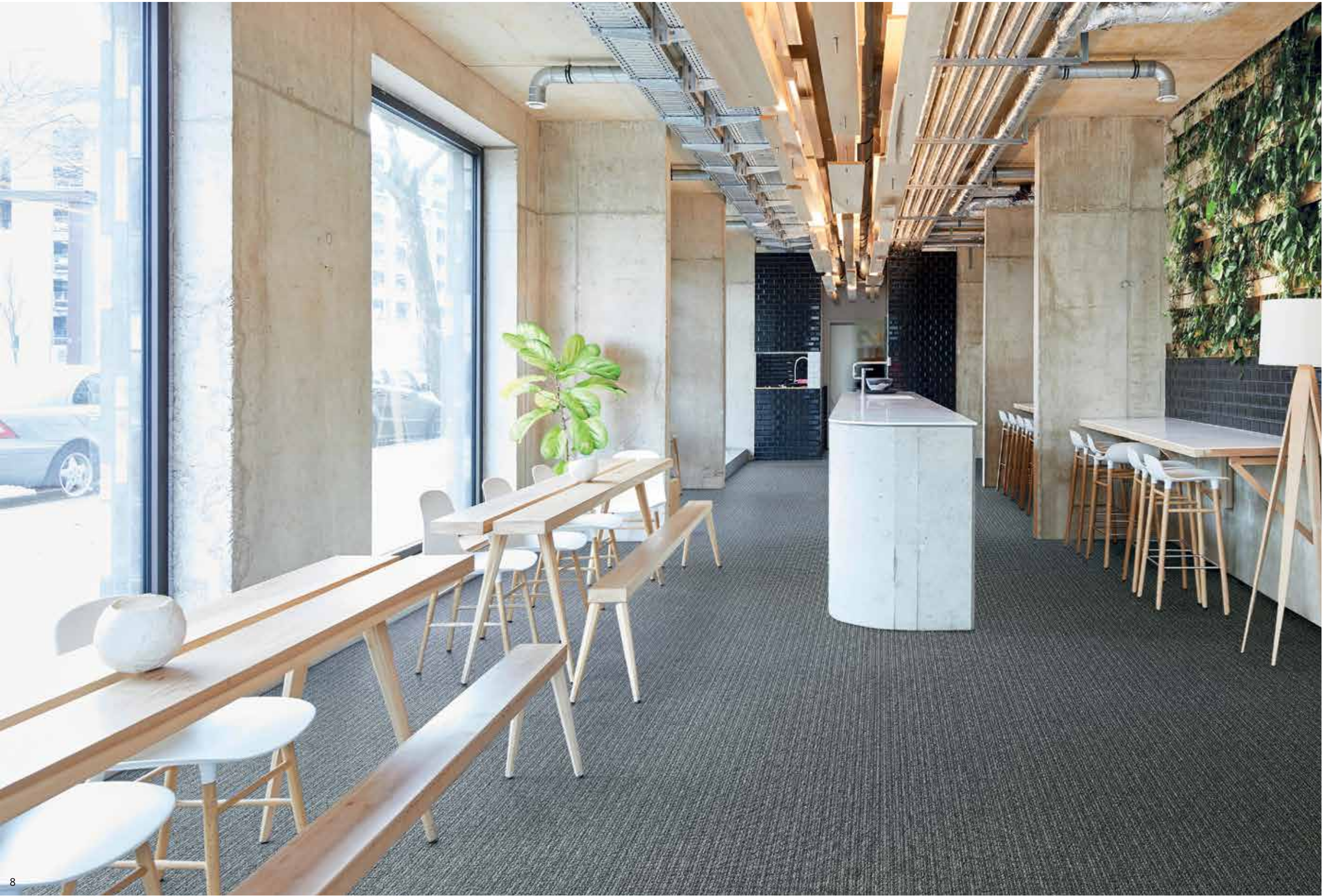
e-blend



1/

e-blend

2 colours blend into a new texture loop pile that features a woven, linear aspect and a dense, performance surface. A highly functional carpet offering bold shades as well as classical tones.



e-blend 942

e-blend | COLOURS



e-blend 130



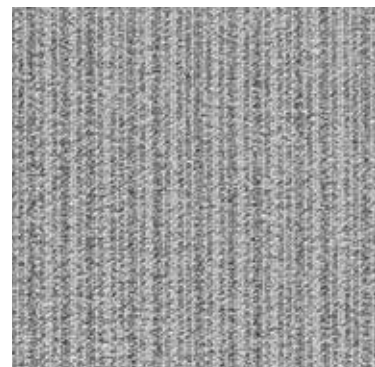
e-blend 306



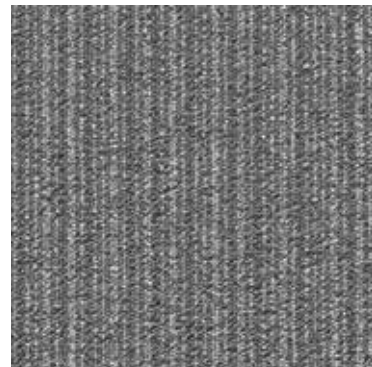
e-blend 332



e-blend 550



e-blend 914



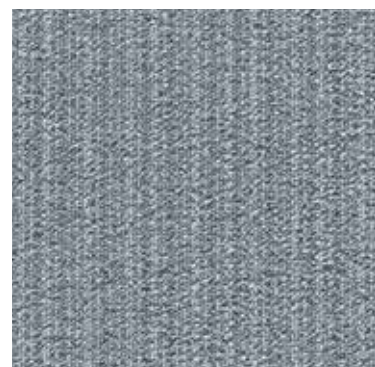
e-blend 942



e-blend 669



e-blend 578



e-blend 957



e-blend 961



e-blend 106



e-blend 991

e-blend | TECHNICAL SPECIFICATIONS

CONSTRUCTION

Tufting 1/10" loop pile

PILE MATERIAL

100% PA solution dyed

PRIMARY BACKING

Non woven PES

SECONDARY BACKING

Action Back

PILE WEIGHT

Ca. 540 gr/m²

TOTAL WEIGHT

Ca. 1 800 gr/m²

PILE HEIGHT

Ca. 3 mm

TOTAL HEIGHT

Ca. 5,4 mm

TUFT DENSITY

Ca. 180 000/m²

PILE DENSITY

Ca. 0.111 g/cm³

CLASSIFICATION

EN 1307

33 - LC1

CASTOR CHAIR SUITABILITY

EN 985

A: intensive use

STAIR SUITABILITY

EN 1963

A: intensive use

PERMANENTLY ANTISTATIC

ISO 6356

< 2 kV

IMPACT NOISE RATING

ISO 140-8

25 dB ΔLw

SOUND ABSORPTION

ISO 354

0.15 aw

THERMAL RESISTANCE

ISO 8302

0.07 m² K/W

FASTNESS TO LIGHT

ISO 105-B02

≥ 7

COLOUR FASTNESS TO WATER

EN ISO 105-E01

≥ 4-5

RUBBING FASTNESS

EN ISO 105-X12

≥ 4

FIRE RESISTANCE

EN 13501-1

Bfl-s1 if glued

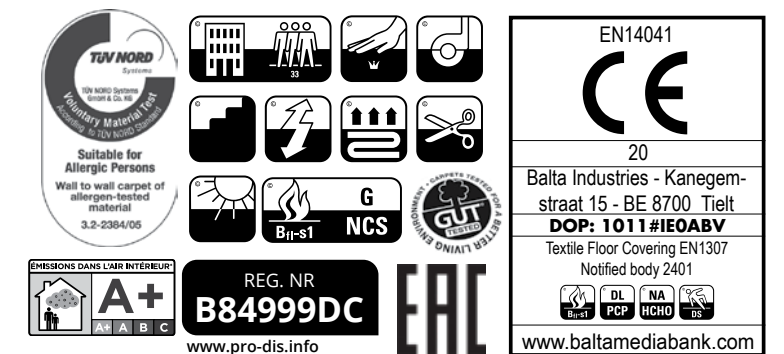
NUMBER OF COLOURS

12

WIDTH

EN ISO 3018

ca. 400 cm





e-blitz

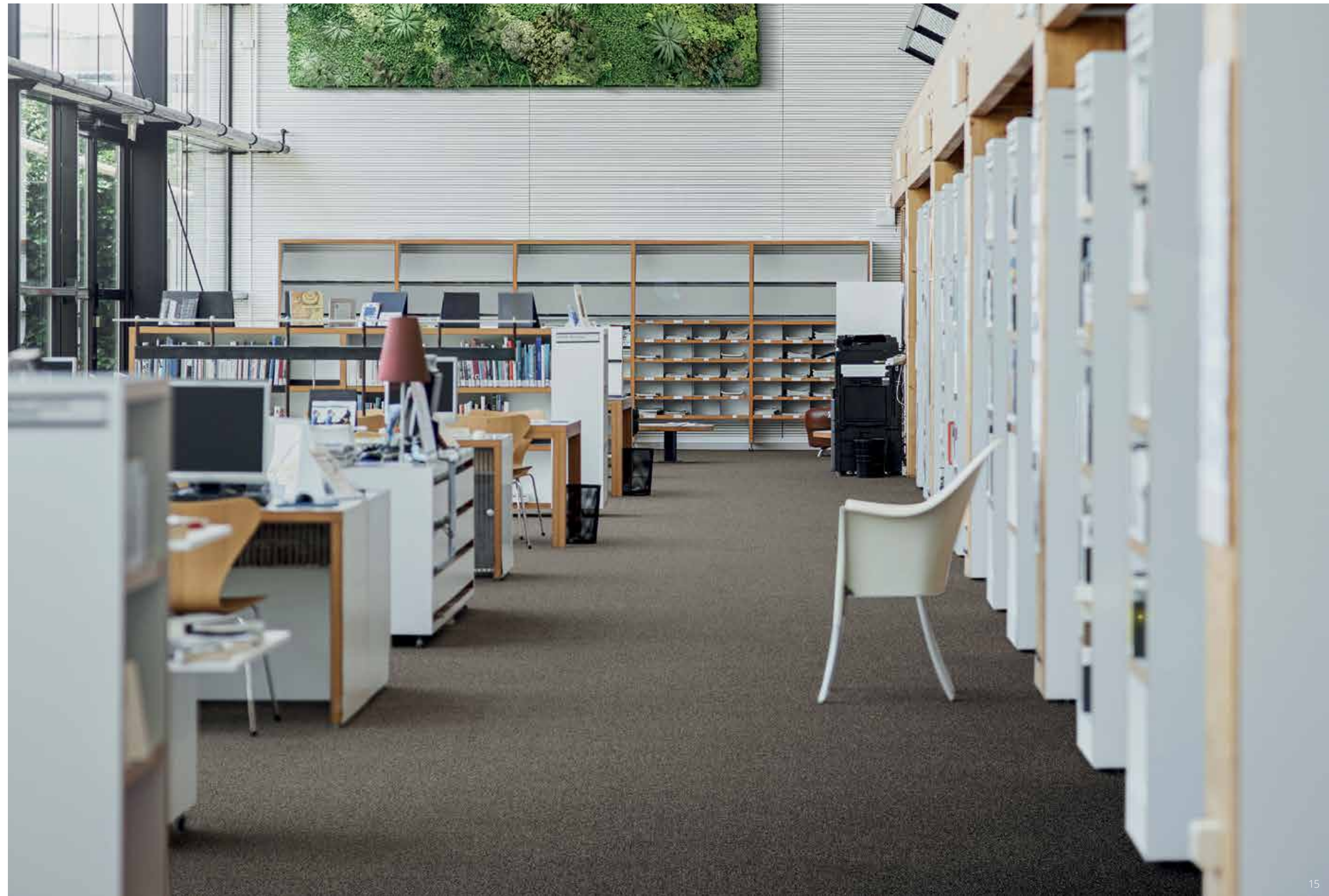
2/ *e-blitz*

Solution dyed polyamide delivers impressive performance to the mottled texture of *e-blitz*. A timeless look that brings the essence of flooring in a ranging colour palette embracing rich colour and practical neutrals.

e-blitz



e-blitz 46





CONSTRUCTION

Tufting 1/10" loop pile

PILE MATERIAL

100% PA solution dyed

PRIMARY BACKING

Non woven PES

SECONDARY BACKING

Action Back

PILE WEIGHT

Ca. 540 gr/m²

TOTAL WEIGHT

Ca. 1 800 gr/m²

PILE HEIGHT

Ca. 3 mm

TOTAL HEIGHT

Ca. 5,4 mm

TUFT DENSITY

Ca. 180 000/m²

PILE DENSITY

Ca. 0.111 g/cm³

CLASSIFICATION

EN 1307

33 - LC1

CASTOR CHAIR SUITABILITY

EN 985

A: intensive use

STAIR SUITABILITY

EN 1963

A: intensive use

PERMANENTLY ANTISTATIC

ISO 6356

< 2 kV

IMPACT NOISE RATING

ISO 140-8

25 dB ΔLw

SOUND ABSORPTION

ISO 354

0.15 αw

THERMAL RESISTANCE

ISO 8302

0.070 m² K/W

FASTNESS TO LIGHT

ISO 105-B02

≥ 7

COLOUR FASTNESS TO WATER

EN ISO 105-E01

≥ 4-5

RUBBING FASTNESS

EN ISO 105-X12

≥ 4

FIRE RESISTANCE

EN 13501-1

Bfl-s1 (if glued)

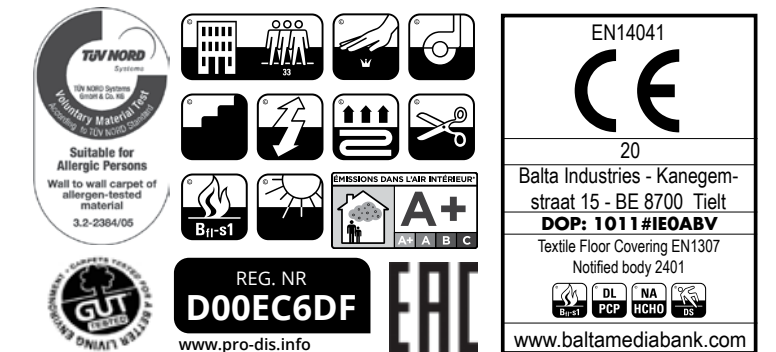
NUMBER OF COLOURS

18

WIDTH

EN ISO 3018

ca. 400 cm





e-check

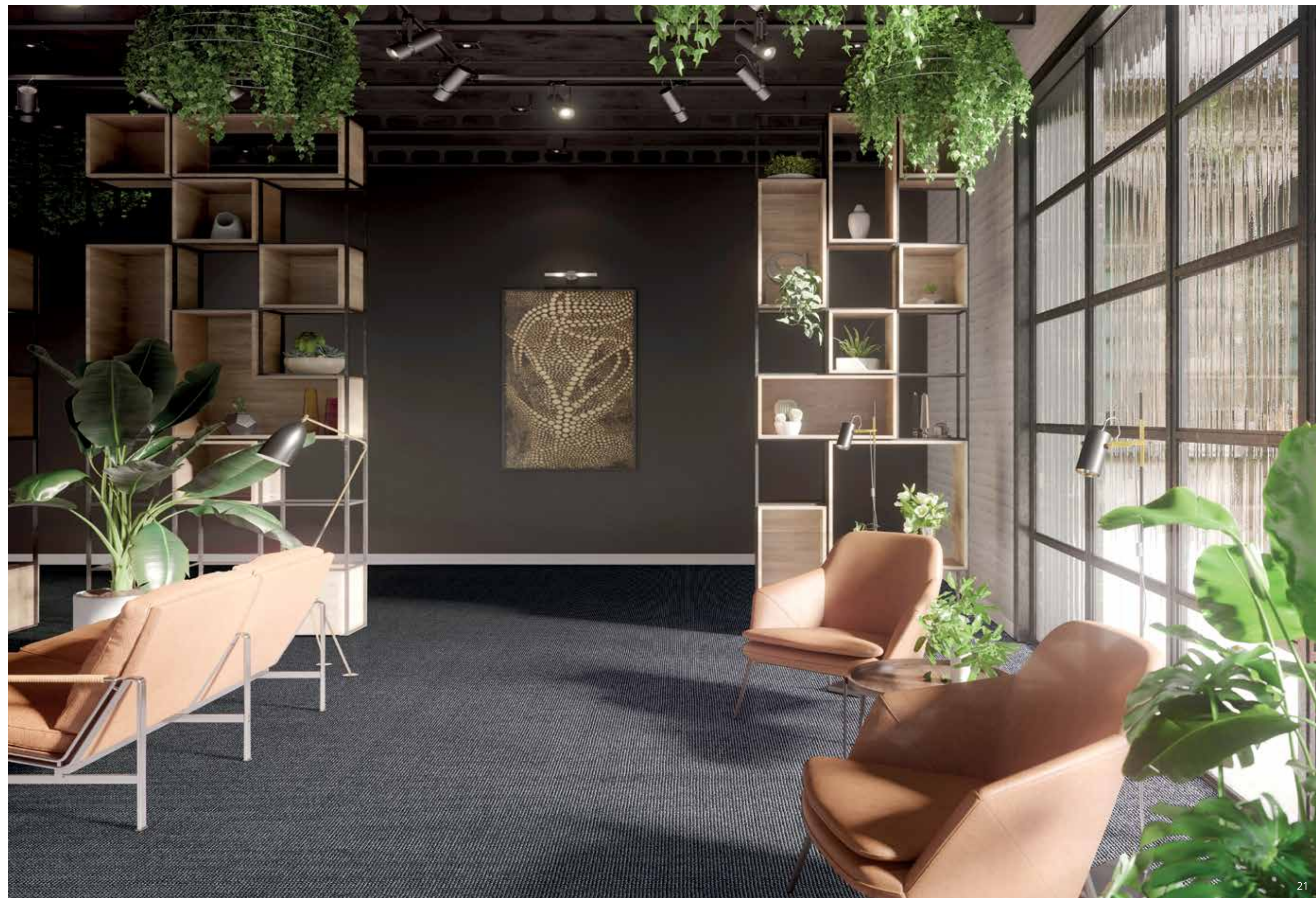
3/ *e-check*

Made from two yarns of different colour, this floor offers a woven aspect in a range of natural and contemporary shades. Its elegant, textile look adds a perfect balance to harmonious interior decorations.

e-check



e-check 98





CONSTRUCTION

Tufting 1/10" loop pile

PILE MATERIAL

100% PA solution dyed

PRIMARY BACKING

Woven PP

SECONDARY BACKING

Action Back

PILE WEIGHT

Ca. 625 gr/m²

TOTAL WEIGHT

1 900 gr/m²

PILE HEIGHT

Ca. 3 mm

TOTAL HEIGHT

Ca. 6 mm

TUFT DENSITY

Ca. 225 000/m²

PILE DENSITY

Ca. 0.123 g/cm³

CLASSIFICATION

EN 1307

33 - LC1

CASTOR CHAIR SUITABILITY

EN 985

A: intensive use

STAIR SUITABILITY

EN 1963

A: intensive use

PERMANENTLY ANTISTATIC

ISO 6356

< 2 kV

IMPACT NOISE RATING

ISO 140-8

25 dB ΔLw

SOUND ABSORPTION

ISO 354

0.15 aw

THERMAL RESISTANCE

ISO 8302

0.07 m²K/W

FASTNESS TO LIGHT

ISO 105-B02

≥ 7

COLOUR FASTNESS TO WATER

EN ISO 105-E01

≥ 4-5

RUBBING FASTNESS

EN ISO 105-X12

≥ 4

FIRE RESISTANCE

EN 13501-1

Cfl-s1

NUMBER OF COLOURS

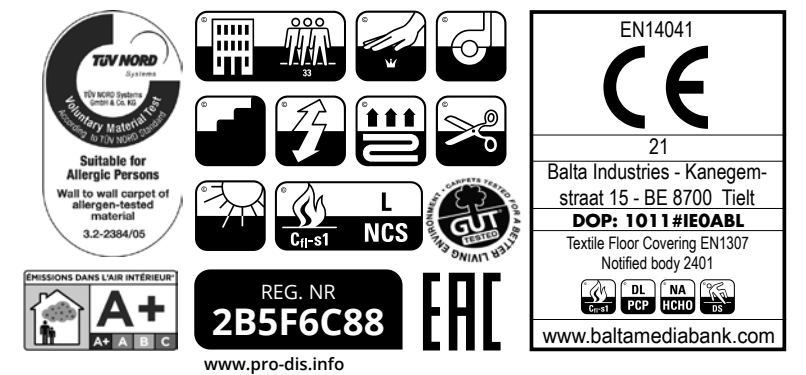
18

WIDTH

EN ISO 3018

ca. 400 cm (7 colours

also in 500 cm)

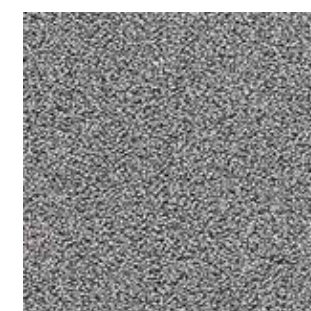




e-firm

4/ *e-firm*

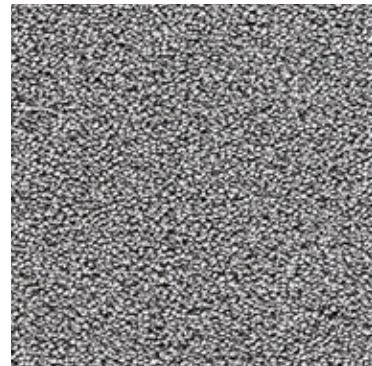
A brand new, two-tone twisted loop pile featuring a top-of-the range construction, the strongest e-ssential has on offer. Its classical & natural colours give a wide choice to uplift floor spaces & make them last in time.



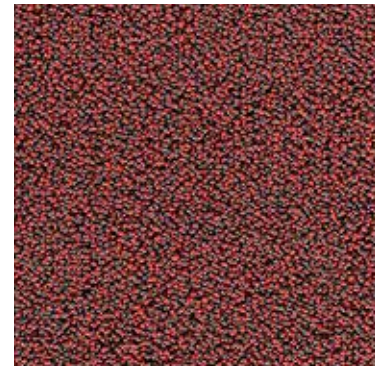
e-firm 93



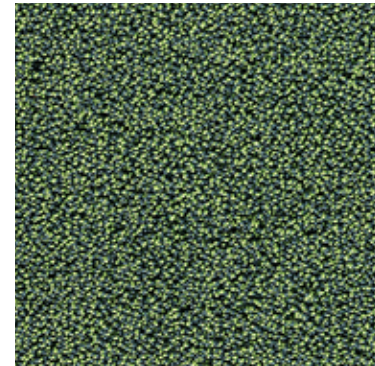
e-firm 39



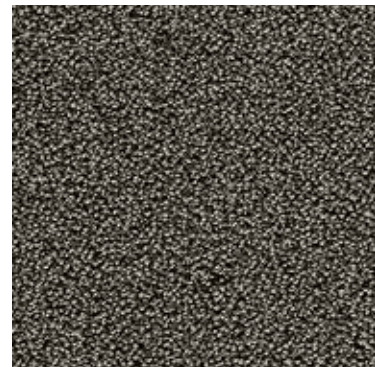
e-firm 93



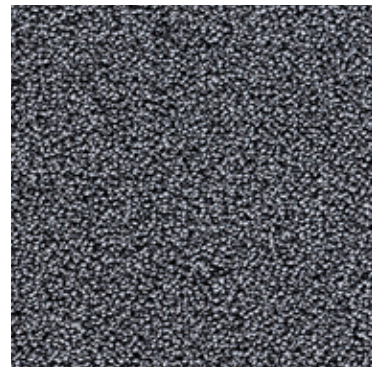
e-firm 11



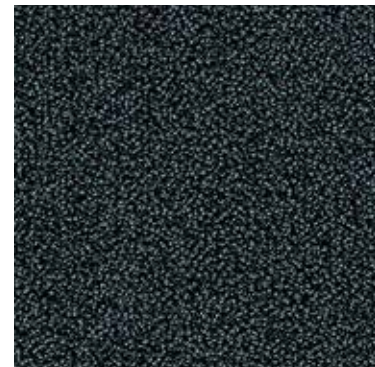
e-firm 22



e-firm 49



e-firm 95



e-firm 97



e-firm 76



e-firm 48



e-firm 96

CONSTRUCTION

Tufting 1/10" loop pile

PILE MATERIAL

100% PA 6 IMPREL®

PRIMARY BACKING

Non woven PES

SECONDARY BACKING

Action Back

PILE WEIGHT

Ca. 945 gr/m²

TOTAL WEIGHT

Ca. 2 250 gr/m²

PILE HEIGHT

Ca. 4 mm

TOTAL HEIGHT

Ca. 6.7 mm

TUFT DENSITY

Ca. 170 000/m²

PILE DENSITY

Ca. 0.169 g/cm³

CLASSIFICATION

EN 1307

33 - LC2

CASTOR CHAIR SUITABILITY

EN 985

A: intensive use

STAIR SUITABILITY

EN 1963

A: intensive use

PERMANENTLY ANTISTATIC

ISO 6356

< 2 kV

IMPACT NOISE RATING

ISO 140-8

25 dB ΔLw

SOUND ABSORPTION

ISO 354

0.15 αw

THERMAL RESISTANCE

ISO 8302

0.08 m² K/W

FASTNESS TO LIGHT

ISO 105-B02

≥ 7

COLOUR FASTNESS TO WATER

EN ISO 105-E01

≥ 4-5

RUBBING FASTNESS

EN ISO 105-X12

≥ 4

FIRE RESISTANCE

EN 13501-1

Cfl-s1

NUMBER OF COLOURS

10

WIDTH

EN ISO 3018

ca. 400 cm

TUV NORD
 100 NORD Safety
 100 NORD Safety
 3.2-2384/05
 Suitable for
 Allergic Persons
 Wall to wall carpet of
 allergen-tested
 material
 3.2-2384/05

CE
 EN14041
 21
 Balta Industries - Kanegem-
 straat 15 - BE 8700 Tielt
DOP: 1011 #IEOACL
 Textile Floor Covering EN1307
 Notified body 2401
 www.baltamediabank.com

REG. NR
99AC32B1
 www.pro-dis.info

EAC

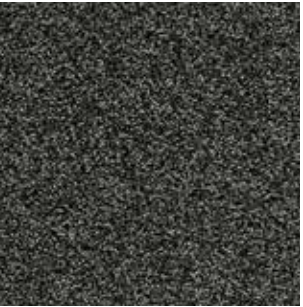


e-force

5/ *e-force*

A deep and inviting twist pile carpet in a two-tone effect, *e-force* brings classic style to commercial spaces. With a broad range of colours that resist stains and won't fade in sunlight, *e-force* is a high-performance quality that's perfect for setting a rich and inviting mood in heavy-wear locations. Bring long-lasting luxury with the endurance of *e-force*.

e-force



e-force 96

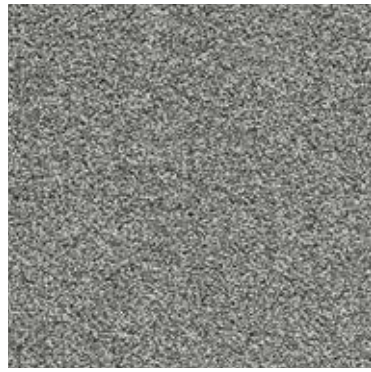
e-force | COLOURS



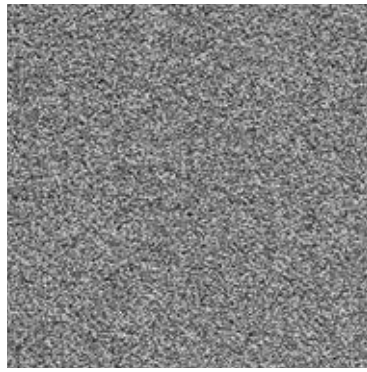
e-force 38



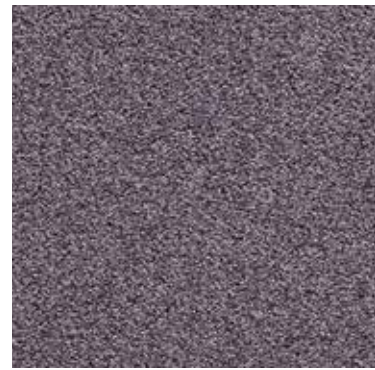
e-force 42



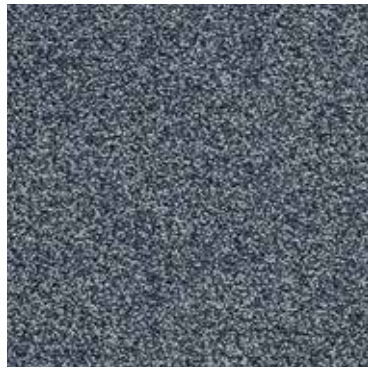
e-force 93



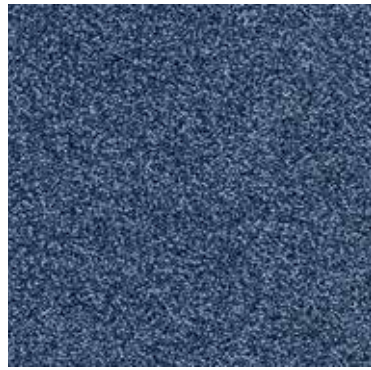
e-force 95



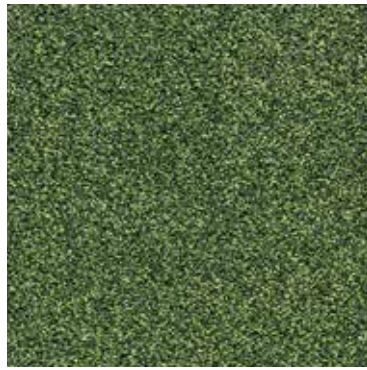
e-force 89



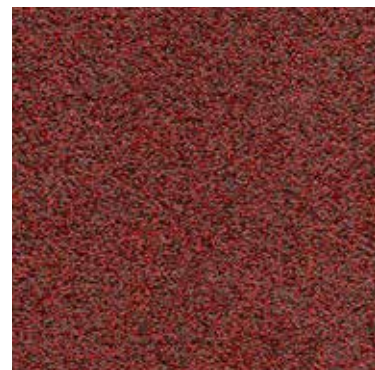
e-force 79



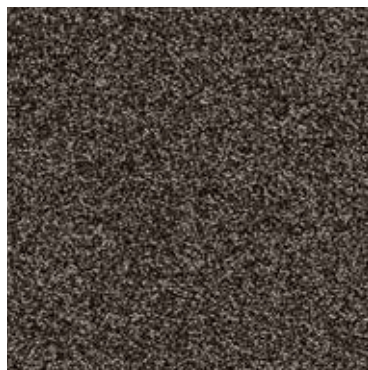
e-force 76



e-force 22



e-force 11



e-force 48



e-force 96



e-force 97

e-force | TECHNICAL SPECIFICATIONS

CONSTRUCTION

Tufting 1/10" twist pile

PILE MATERIAL

100% PA solution dyed

PRIMARY BACKING

Non woven PES

SECONDARY BACKING

Action Back

PILE WEIGHT

Ca. 1 270 gr/m²

TOTAL WEIGHT

Ca. 2 200 gr/m²

PILE HEIGHT

Ca. 6.7 mm

TOTAL HEIGHT

Ca. 9 mm

TUFT DENSITY

Ca. 182 000/m²

PILE DENSITY

Ca. 0.163 g/cm³

CLASSIFICATION

EN 1307

33 - LC5

CASTOR CHAIR SUITABILITY

EN 985

A: intensive use

STAIR SUITABILITY

EN 1963

A: intensive use

PERMANENTLY ANTISTATIC

ISO 6356

< 2 kV

IMPACT NOISE RATING

ISO 140-8

28 dB ΔLw

SOUND ABSORPTION

ISO 354

0.20 aw

THERMAL RESISTANCE

ISO 8302

0.11 m² K/W

FASTNESS TO LIGHT

ISO 105-B02

≥ 7

COLOUR FASTNESS TO WATER

EN ISO 105-E01

≥ 4-5

RUBBING FASTNESS

EN ISO 105-X12

≥ 4

FIRE RESISTANCE

EN 13501-1

Cfl-s1

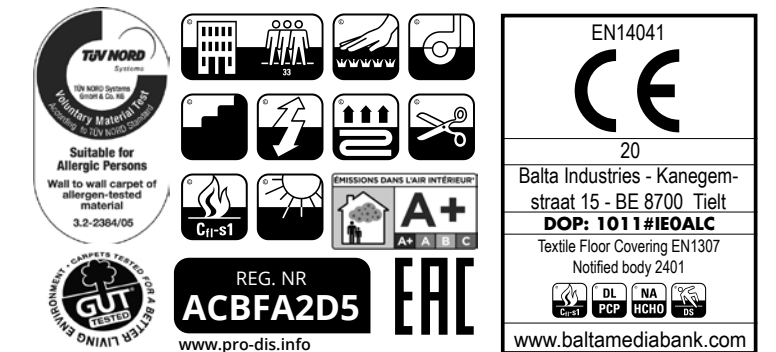
NUMBER OF COLOURS

12

WIDTH

EN ISO 3018

ca. 400 cm



e-major



6/ *e-major*

A level-loop pile in a subtle grain effect, *e-major* brings a contemporary aesthetic that minimises the appearance of footprints. Remarkably resistant to sunlight and easy to clean, *e-major* is an ideal fit in high-traffic areas such as hotel lobbies or airport halls. Make a lasting impression with the majestic design of *e-major*.

e-major



e-major 78



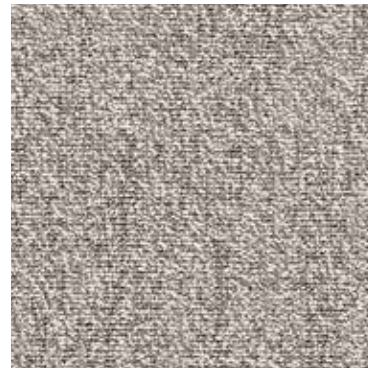
e-major 72



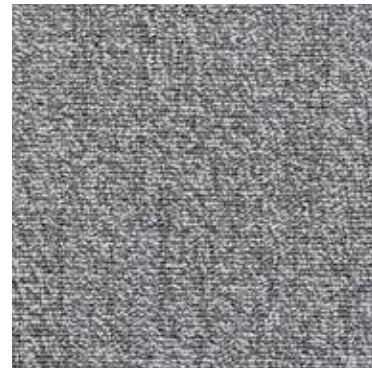
e-major | COLOURS



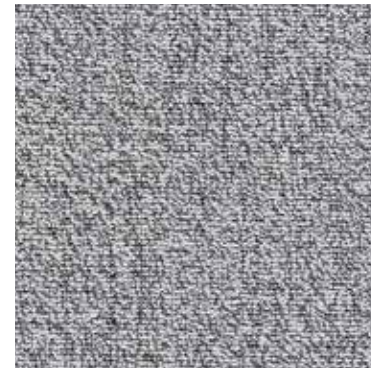
e-major 32



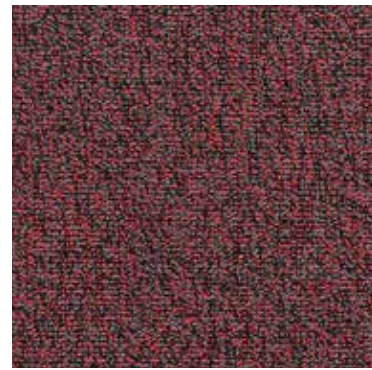
e-major 47



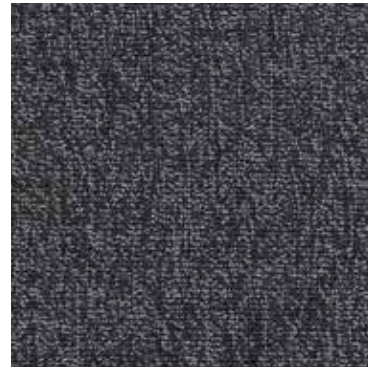
e-major 93



e-major 90



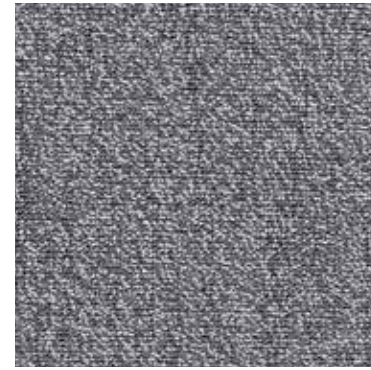
e-major 12



e-major 98



e-major 96



e-major 97



e-major 72



e-major 78

e-major | TECHNICAL SPECIFICATIONS

CONSTRUCTION

Tufting 1/10" textured loop

PILE MATERIAL

100% PA solution dyed

PRIMARY BACKING

Non woven PES

SECONDARY BACKING

Action Back

PILE WEIGHT

Ca. 640 gr/m²

TOTAL WEIGHT

Ca. 2 050 gr/m²

PILE HEIGHT

Ca. 2.8 mm

TOTAL HEIGHT

Ca. 6 mm

TUFT DENSITY

Ca. 140 000/m²

PILE DENSITY

Ca. 0.125 g/cm³

CLASSIFICATION

EN 1307

33 - LC1

CASTOR CHAIR SUITABILITY

EN 985

A: intensive use

STAIR SUITABILITY

EN 1963

A: intensive use

PERMANENTLY ANTISTATIC

ISO 6356

< 2 kV

IMPACT NOISE RATING

ISO 140-8

24 dB ΔLw

SOUND ABSORPTION

ISO 354

0.15 αw

THERMAL RESISTANCE

ISO 8302

0.07 m² K/W

FASTNESS TO LIGHT

ISO 105-B02

≥ 7

COLOUR FASTNESS TO WATER

EN ISO 105-E01

≥ 4-5

RUBBING FASTNESS

EN ISO 105-X12

≥ 4

FIRE RESISTANCE

EN 13501-1

Cfl-s1

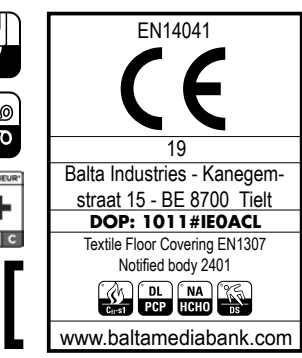
NUMBER OF COLOURS

10

WIDTH

EN ISO 3018

ca. 400 cm

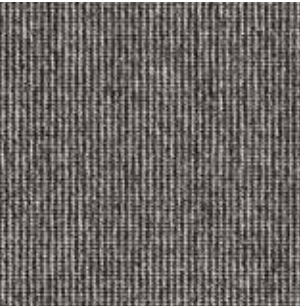


e-weave



e-weave

Nature meets modernity in *e-weave*, possessing the collection's finest weave. This two-tone design displays a subtle elegance that never goes out of style. With a striking minimalist look, *e-weave* delivers impressive wear-resistance and durability.



e-weave 96



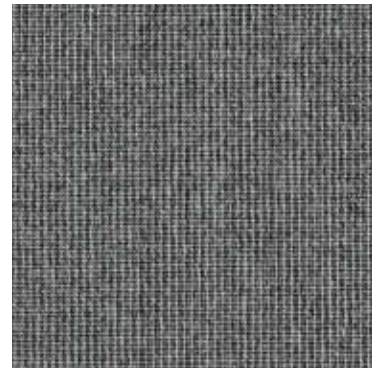
e-weave 73



e-weave 78



e-weave 79



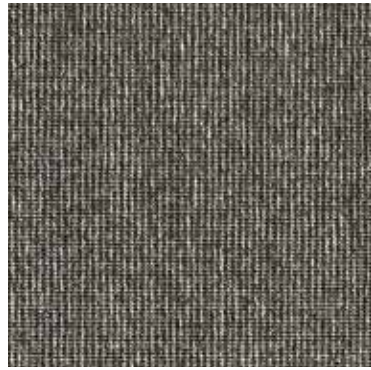
e-weave 90



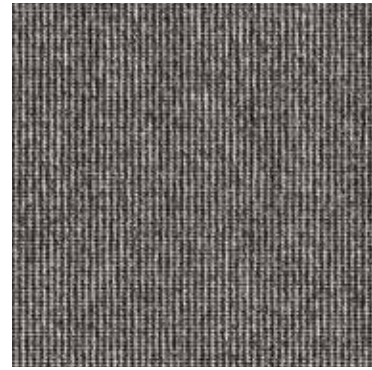
e-weave 94



e-weave 99



e-weave 98



e-weave 96



e-weave 49



e-weave 34



e-weave 93

CONSTRUCTION

Tufting 5/64" minituft

PILE MATERIAL

100% PA solution dyed

PRIMARY BACKING

Non woven PES

SECONDARY BACKING

Action Back

PILE WEIGHT

Ca. 500 gr/m²

TOTAL WEIGHT

Ca. 2 400 gr/m²

PILE HEIGHT

Ca. 1.1 mm

TOTAL HEIGHT

Ca. 5.1 mm

TUFT DENSITY

Ca. 200 000/m²

PILE DENSITY

Ca. 0.156 g/cm³

CLASSIFICATION

EN 1307

33 - LC1

CASTOR CHAIR SUITABILITY

EN 985

A: intensive use

STAIR SUITABILITY

EN 1963

A: intensive use

PERMANENTLY ANTISTATIC

ISO 6356

< 2 kV

IMPACT NOISE RATING

ISO 140-8

18 dB ΔLw

SOUND ABSORPTION

ISO 354

0.15 aw

THERMAL RESISTANCE

ISO 8302

0.05 m² K/W

FASTNESS TO LIGHT

ISO 105-B02

≥ 7

COLOUR FASTNESS TO WATER

EN ISO 105-E01

≥ 4-5

RUBBING FASTNESS

EN ISO 105-X12

≥ 4

FIRE RESISTANCE

N 13501-1

Cfl-s1 (if glued)

NUMBER OF COLOURS

11

WIDTH

EN ISO 3018

ca. 400 cm

TUV NORD
 100% NORD Safety
 Industry Material Test
 Suitable for Allergic Persons
 Wall to wall carpet of allergen-tested material
 3.2-2384/05

CE
 EN14041
 19
 Balta Industries - Kanegem-
 straat 15 - BE 8700 Tielt
DOP: 1011#IEOACL
 Textile Floor Covering EN1307
 Notified body 2401

REG. NR 7E146FDC
 www.pro-dis.info

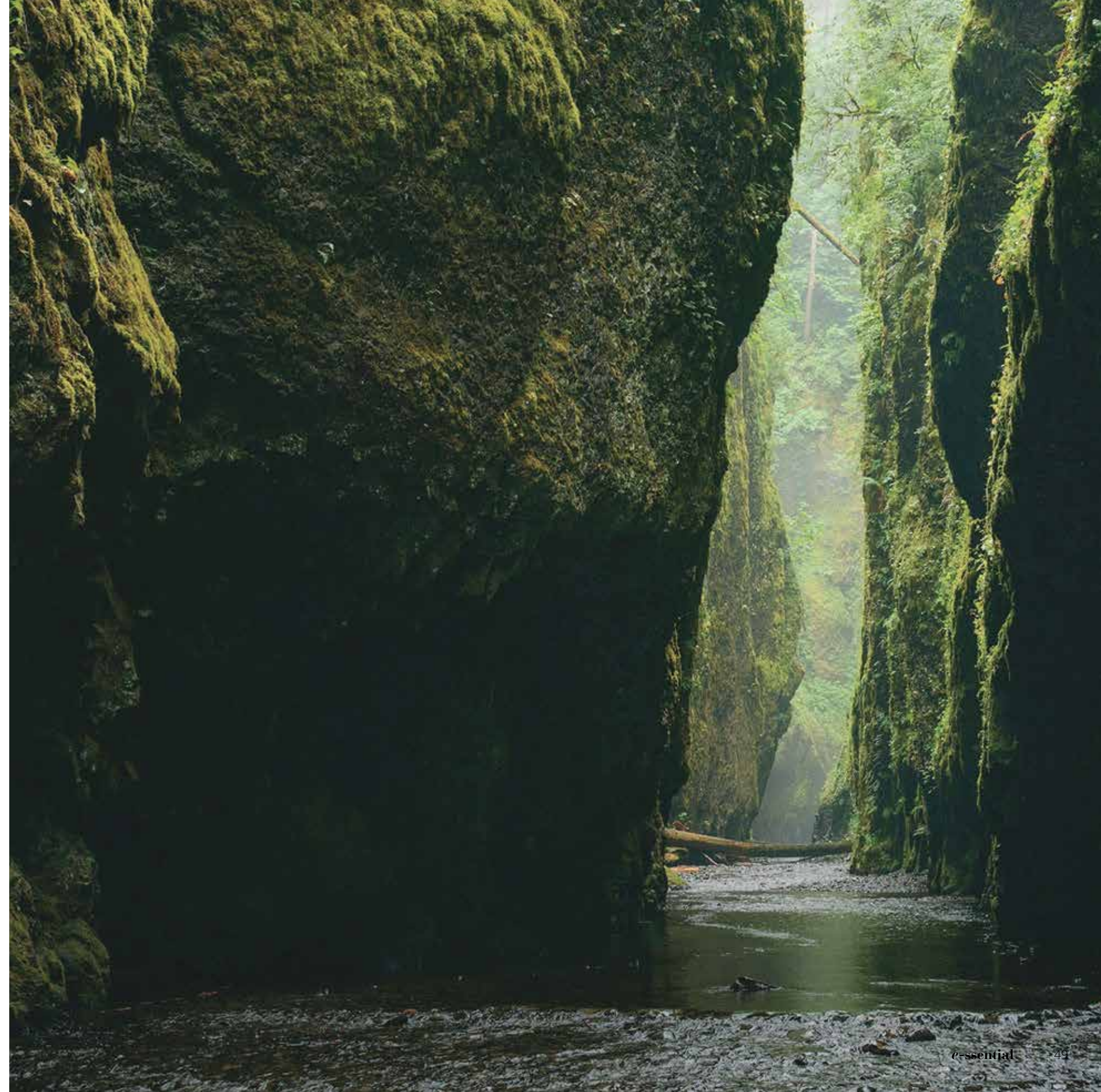
EAC
 www.baltamediabank.com



Is e-ssential your natural choice?
Let's talk!

INFO@ARCEDITION.COM

ITC Co BV
Kanegemstraat 15 - B-8700 Tielt - Belgium - T +32 (0)51 42 44 11
info@arcedition.com - www.arcedition.com



www.arcedition.com

 arc edition®